



TS-905

# Blue Eye™

## Submucosal Injection Agent

Canister of 10 syringes 5ml ea

# Keep that lesion lifted

**Blue Eye™** is indicated for submucosal lift of lesions **in the GI tract.**  
Polypectomy, EMR, ESD



### Twice as Long-lasting

Blue Eye™ has twice as long - lasting mucosal elevation which reduces entire procedure time and increases the success rate of the endoscopic procedure.



### Safe

Blister packaging acts as a sterile barrier and protects against cross-contamination; maintaining sterility from manufacturing until usage



### Easy to use

Blue Eye™ is easy to use because it can be connected directly to the injection needle.



### Biocompatible

Blue Eye™ is biocompatible; it contains hyaluronic acid, a biopolymer naturally present in the human dermis, and similar to human tears.



Made in Korea / CE certificate / 5ml Sterile and Pre-filled Syringe / Shelf Life: 2 years






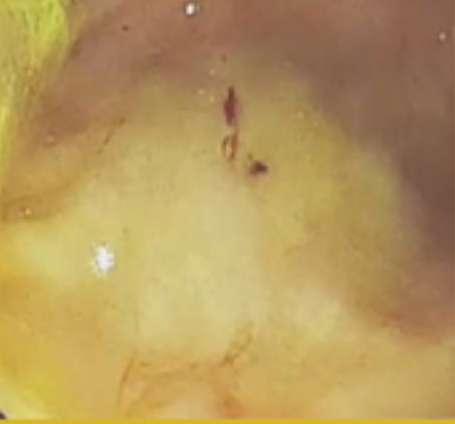

# TS-905 Blue Eye™

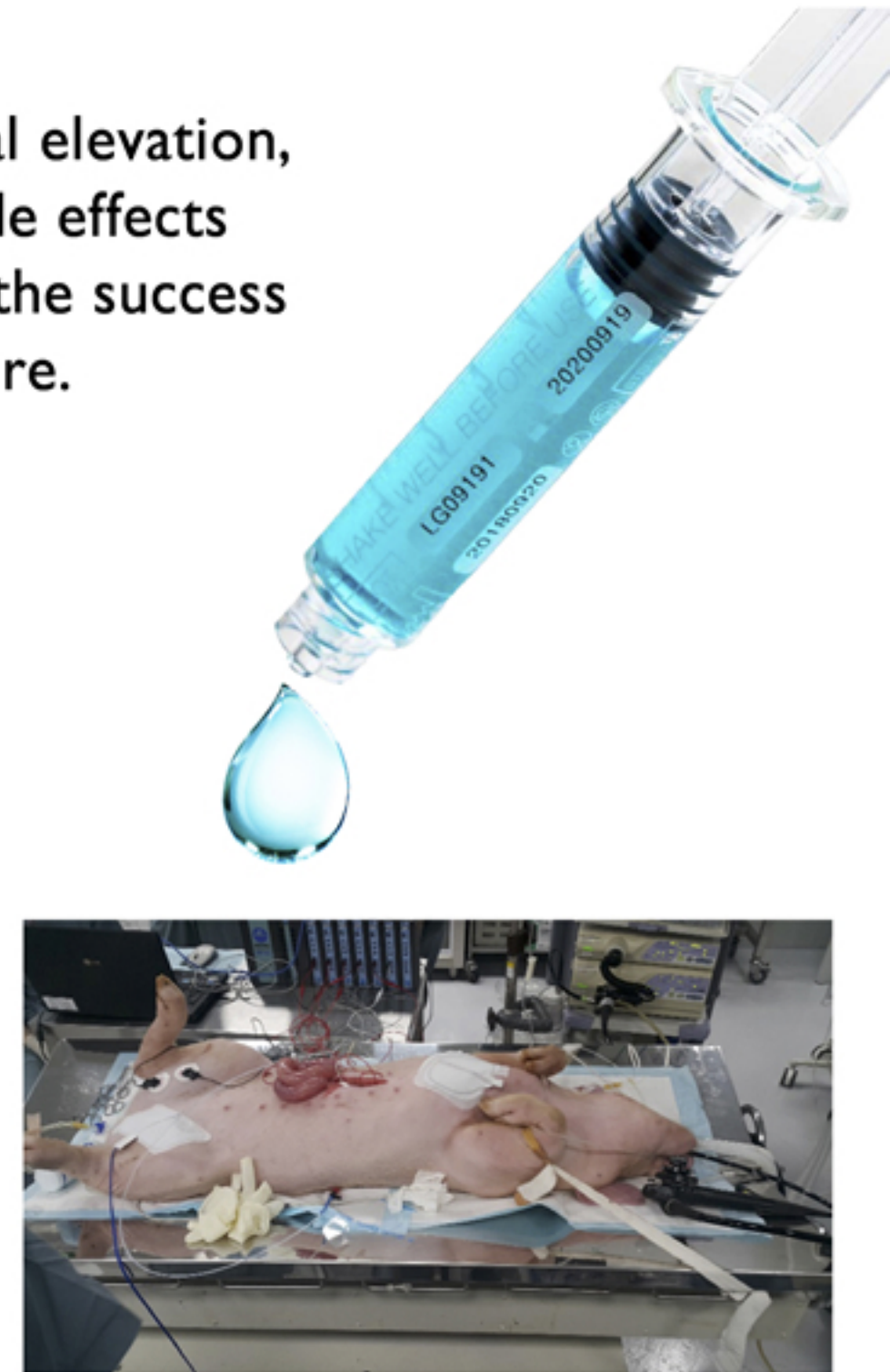
## Submucosal Injection Agent

“ Highly Effective ”

Blue Eye™ has twice as long-lasting mucosal elevation, reduces procedure time and side effects such as perforation, increasing the success rate of the endoscopic procedure.

### Elevation Test

	Normal Saline	Predicate	Blue Eye
Injection			
30 minutes Later			



May 29, 2018 16:40~17:20 tested by SW Jung  
Laboratory Animal Research Center,  
Korea University College of Medicine

Endo Surgical Source  
425 Hope Rd  
New Bloomfield, PA 17068  
717-503-7012

email orders to: [orders@blackandblueeye.com](mailto:orders@blackandblueeye.com)